



Landfill data management at OVAM:

Prospecting redevelopment opportunities with the Cedalion tool

Cuinera Isenborghs, Project assistant - OVAM

Eddy Wille, Senior advisor - OVAM

Intersoil 2022 – Session Soils and digital management

Content

► Introduction - Eddy

- Landfills & contaminated sites
- First steps on mapping
- Land Register & Soil certificates
- Data management & roadmaps

► Valorisation of old landfills – Cuinera

- Content & context
- ELFM & DLM
- Opportunity mapping
- Next steps



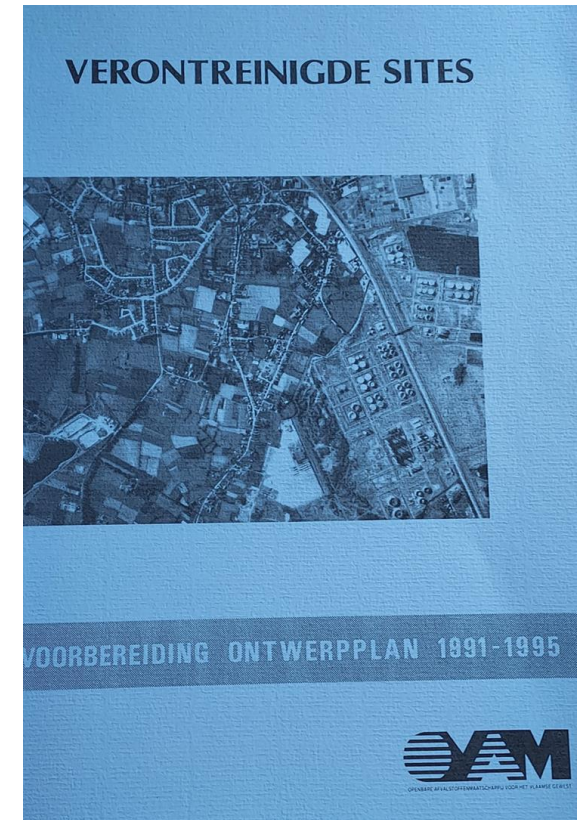
Flanders
State of
the Art

Introduction

In the beginning, there was nearly nothing...

Landfills & contaminated sites

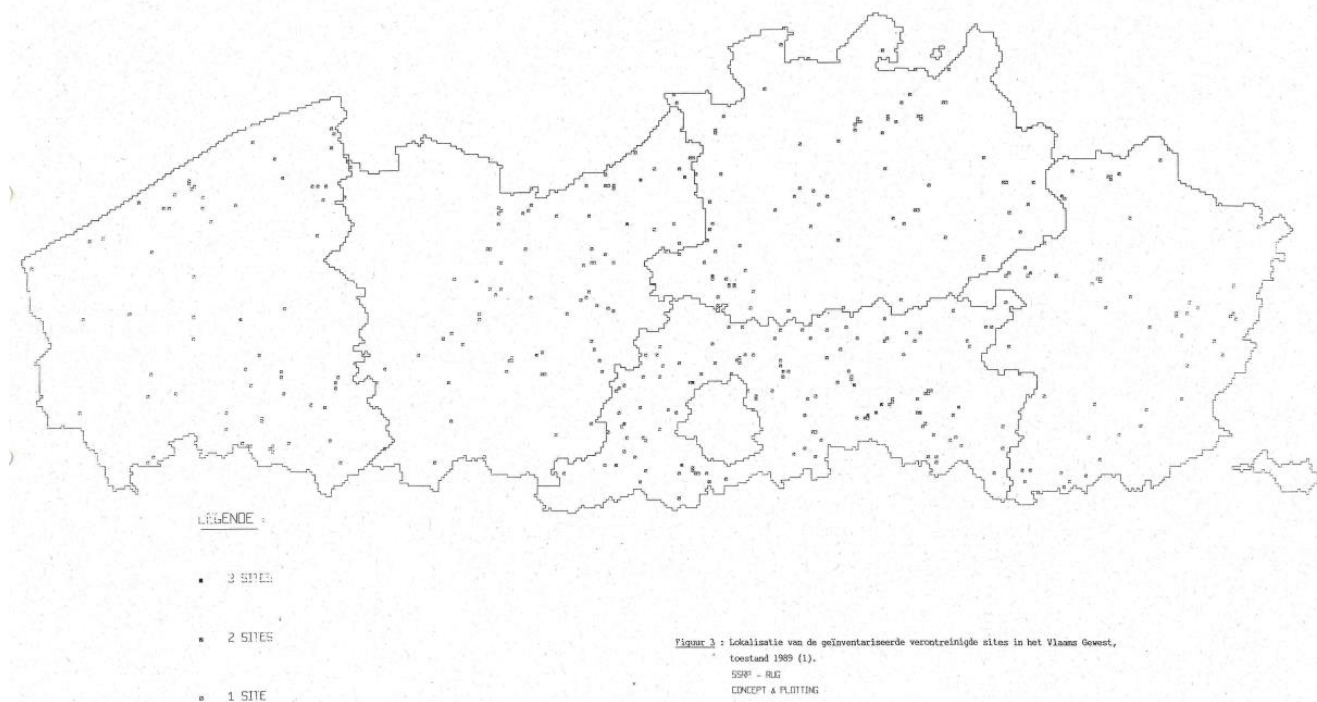
- ▶ **Why should we be interested in landfills?**
 - USA – Love Canal -> RCRA / Superfund
 - Netherlands – Lekkerkerk -> Interimwet Bodemsanering
 - Germany – Schönberg -> Basel convention (?)
 - Highly contaminated sites in a vulnerable environment
 - Soil no longer considered as natural safe deposit
- ▶ **What's the situation in Flanders?**
 - Landfilling most chosen option but lack of statistics
 - Permits on Waste management : soil rather invisible
- ▶ **How was the response?**
 - Waste management Act : organizing safe evacuation & storage of waste
 - New Article 21§2,c : OVAM appointed as competent authority for cleaning and remediating industrial facilities and landfills



First steps on mapping

Potentially polluting operations/contaminated sites:

- 1989: 8.986
- 1995: 76.200 – 84.000



Tabel 5 : Vergelijking van de saneringsproblematiek tussen de Duitse Bondsrepubliek, Nederland en Vlaanderen.

Eigenschap	Duitse Bondsrepubliek (2)	Nederland (3)	Vlaanderen (4)
ALGEMENE GEGEVENS			
Oppervlakte (km ²)	248.542	41.160	13.512
Aantal inwoners (x 10 ⁶)	62	14,5	5,7
POTENTIEEL VERONTREINIGDE SITES			
Stortplaatsen (STP)	30.000	3.298	422 (a)
Opslag voertuigwrakken		2.100	1.640 (b)
Gasfabrieksterreinen		234	- (c)
Vormalige fabrieksterreinen (FT)	5.000	± 400.000	6.924 (d)
Huidige fabrieksterreinen		± 120.000	
Tot. Potentiële verontreinigde sites	35.000	± 526.000	8.986
GRADATIE VERONTREINIGDE SITES			
Onschuldig	21.000 STP 1.000 FT (63 %)	419.048 (80 %)	
Blijvend te controleren	6.000 STP 1.600 FT (22 %)		
Saneren	3.000 STP 2.400 FT (15 %)	106.584 (20 %)	
TOTAAL	35.000	525.632	



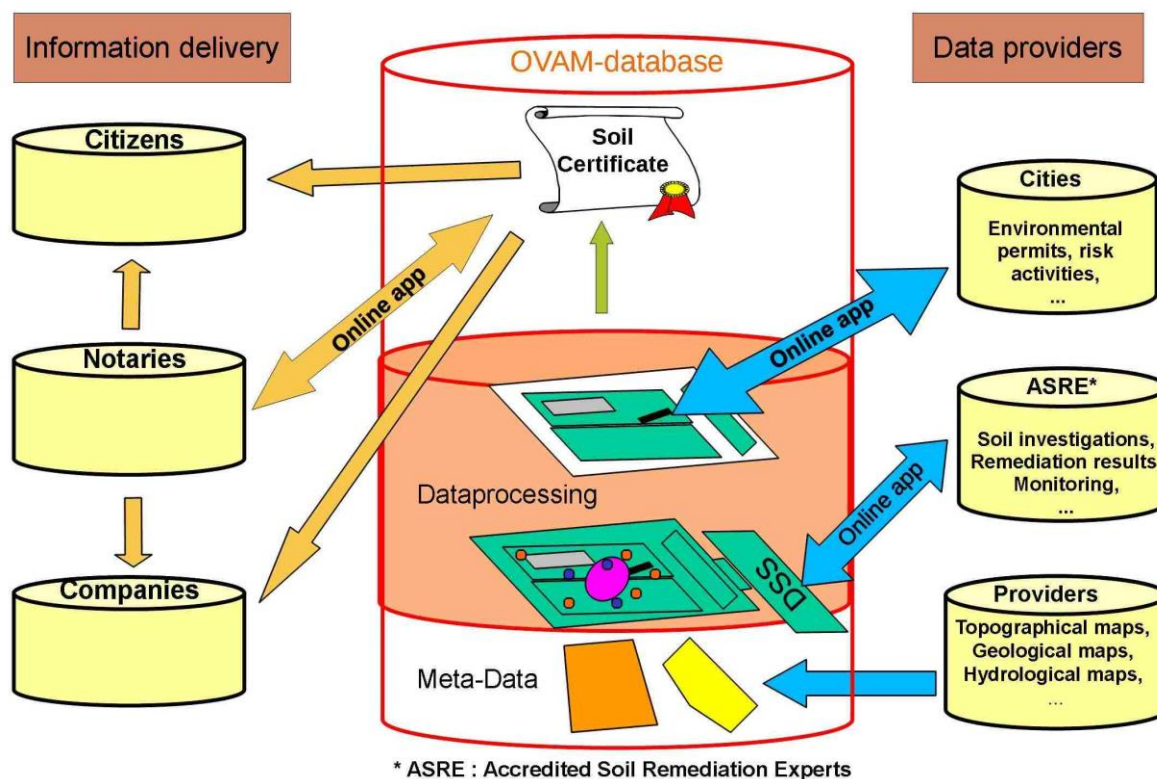
Flanders
State of the Art

WE MAKE
TOMORROW
BEAUTIFUL
OVAM

Land register & Soil certificates

Emphasis on administrative and legal aspects with regard to the Soil (remediation) Act.

- Identification of land plot;
 - Validated reports in LIR ⁽¹⁾;
 - Consequences of encountered contamination.
- Not a detailed description of the site history and results of investigations/ remedial actions.
- Limited geographical data available (no systematic georeferenced sampling/analysis data).



Data management & roadmaps

A large diversity of demands and challenges require not only more data but other ways of data management.

Introduction of roadmaps on:

- GIS & Geostatistics;
- Web-based applications;
- Decision support tools;
- ...

(*) Keep in mind

The perfect is the enemy of the good:

one might never complete a task if one has decided not to stop until it is perfect; completing the project well is made impossible by striving to complete it perfectly.

Analysis-paralysis:

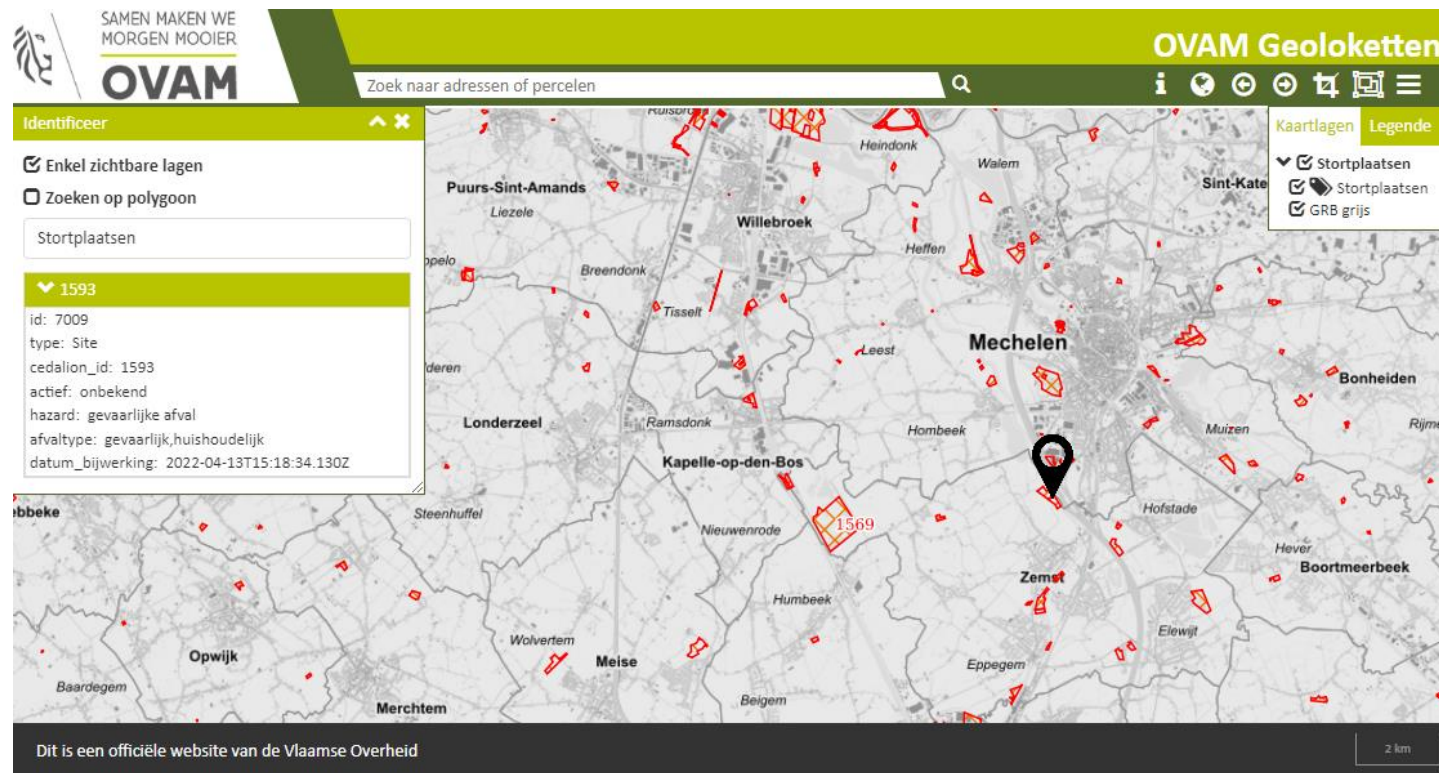
Over-thinking and/or analyzing a situation until you get overwhelmed and don't take action.



Landfill data

- ▶ Result of years of inventarisation and data management on landfills
- ▶ Published in August 2022
- ▶ Conform INSPIRE directive
- ▶ Public consultation on OVAM geoloket
- ▶ Soon: MercatorNet

<https://ovam.vlaanderen.be/overzicht-stortplaatsen>





Flanders
State of
the Art

Valorisation of landfills

From linear to circular

Revalorization = the act of thinking or stating again that something has value, especially when it has not been thought to have value in the past. (Cambridge dictionary)

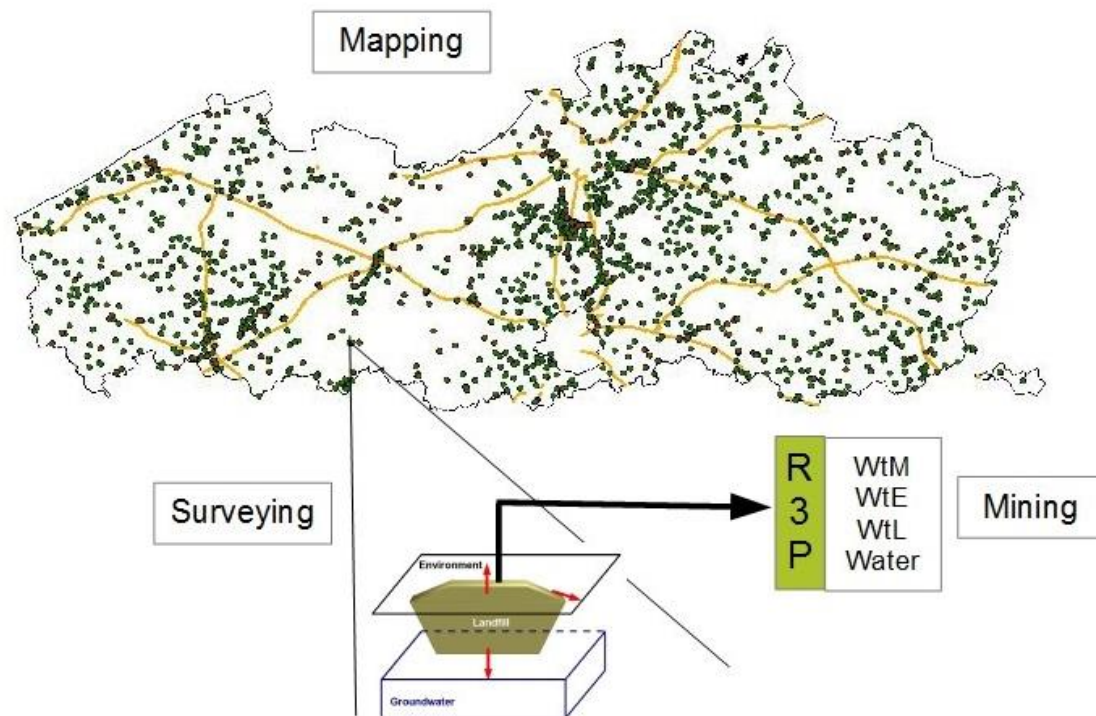
- an eternal loss of materials and land as result of linear economy

- an asset of materials and land as part of a circular economy?

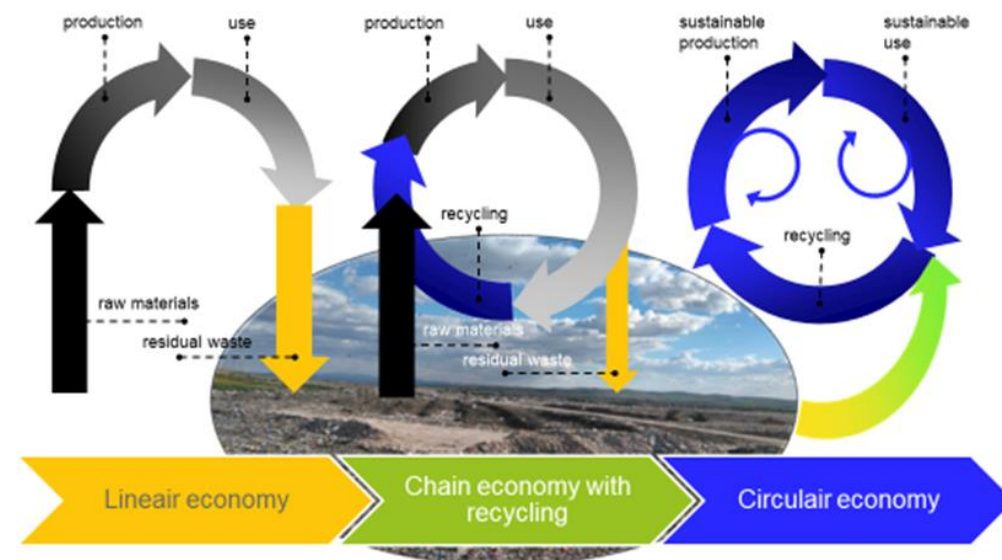


ELFM & DLM: a shift

Enhanced landfill mining



Dynamic landfill management



Flanders
State of the Art

Focus on content

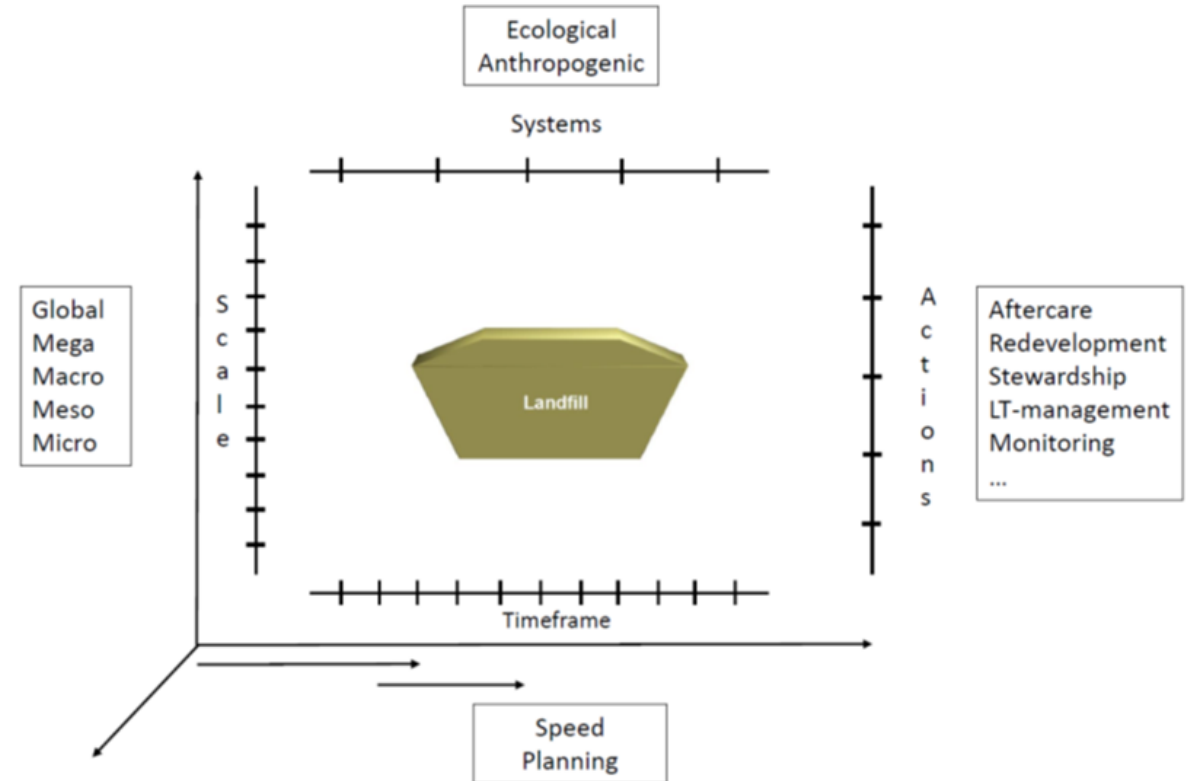
Focus on content + context

WE MAKE
TOMORROW
BEAUTIFUL
OVAM

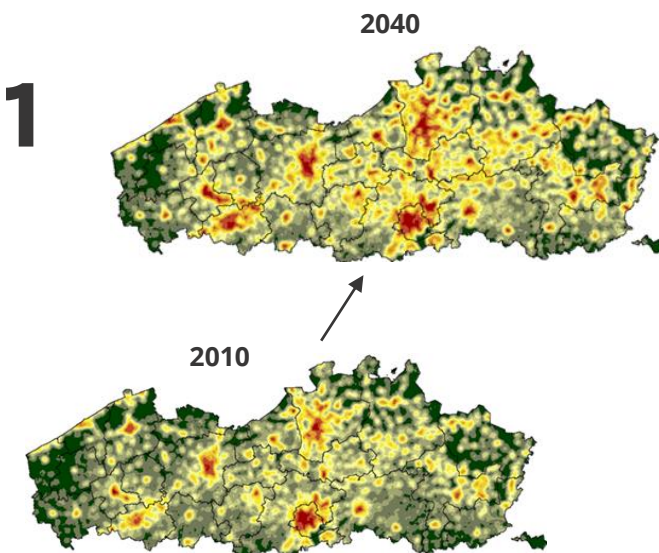
Landfills: content & context

Identification of the system dynamics:

- Ecological and economic drivers;
- Ranging scales and their magnitude;
- Diversity of stakeholders;
- Uncertainties about causes, consequences & remedies;
- Different formal & informal laws and levels of government;
- Complex dependencies which constantly change;
- ...

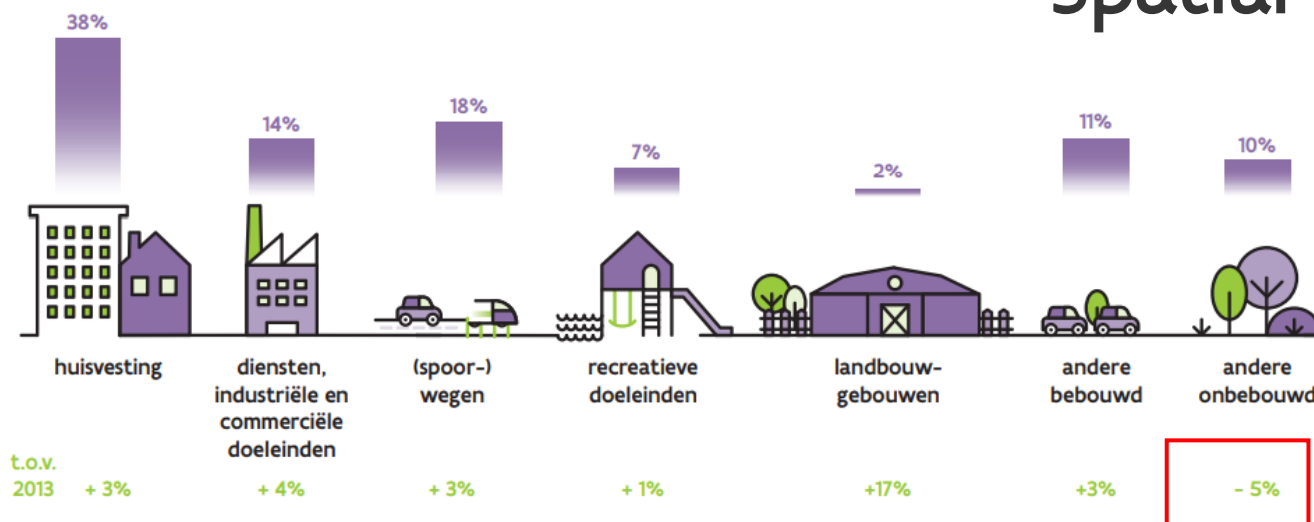


Ruimterapport Vlaanderen 2021



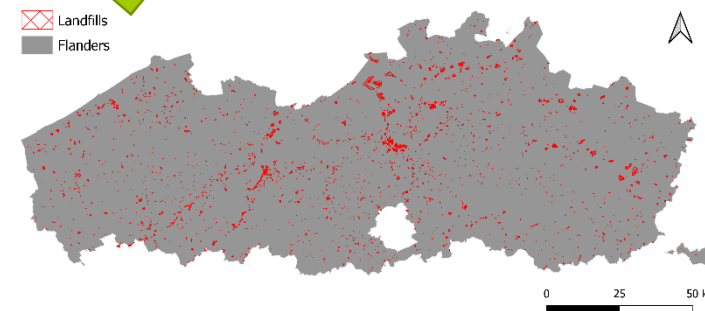
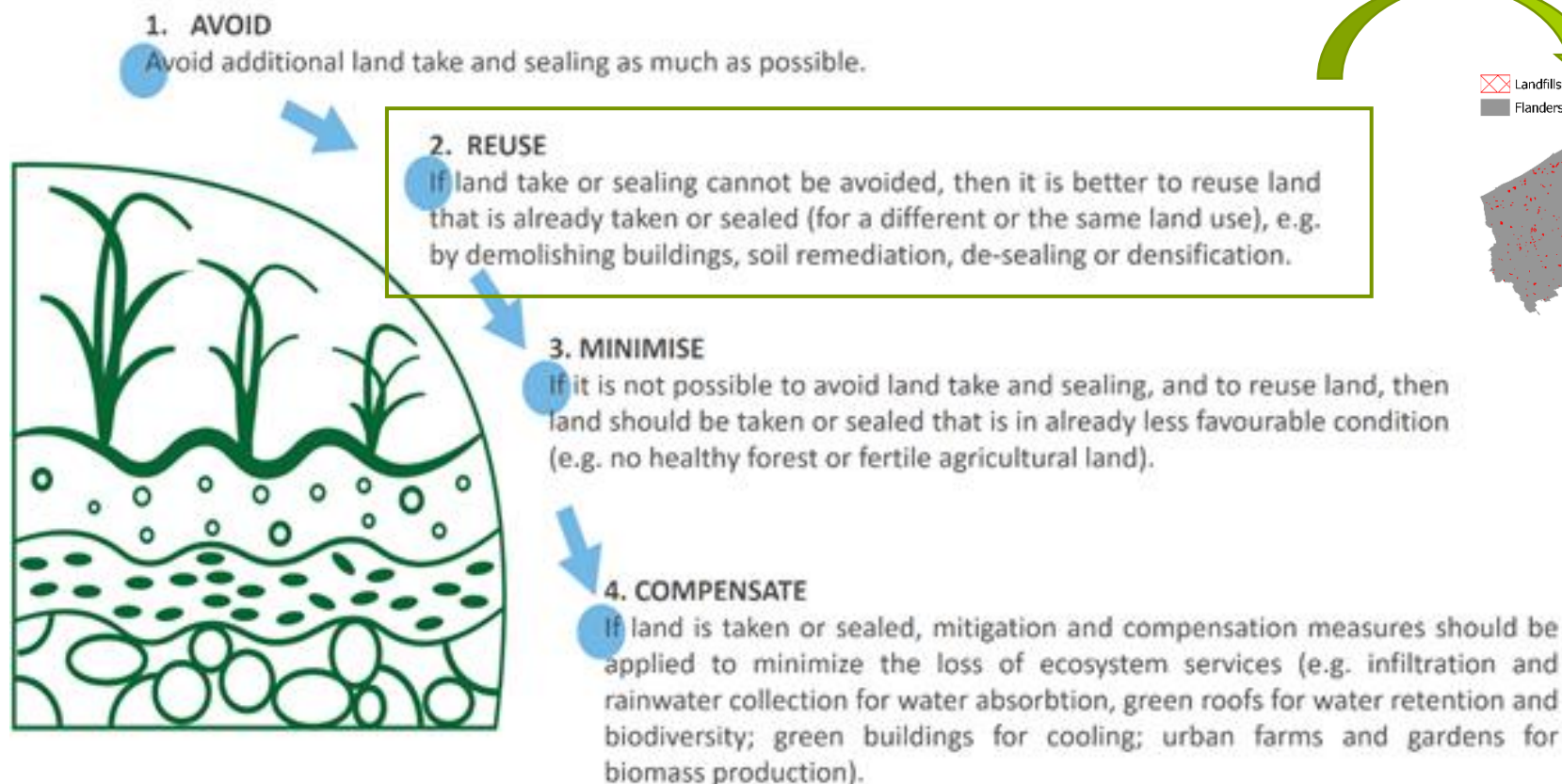
Spatial pressure!

- Flanders is a very densely populated area
- Scarcity of (open) space



Land recycling!

Potential of landfills = ca. 1% of Flanders area



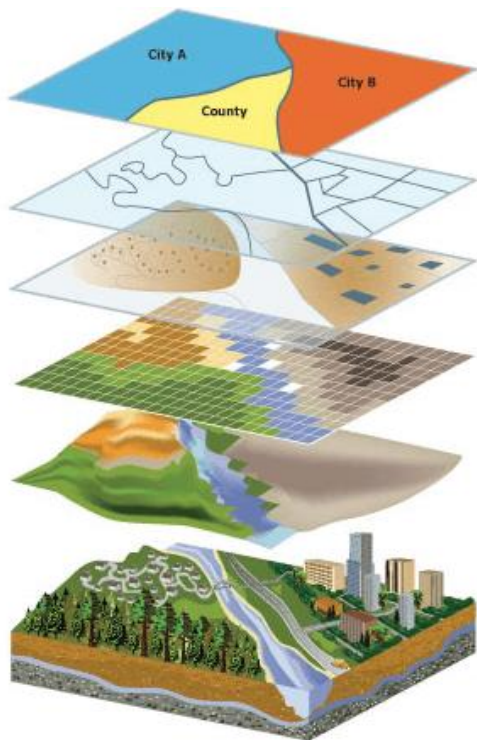


Flanders
State of
the Art

Opportunity mapping

Virtual reality or daily business?

Detecting opportunities at landfills



- ▶ Cedalion
- ▶ Spatial Model of Flanders (VITO)
- ▶ Combining different spatial layers
- ▶ Defining spatial criteria and constraints in function of specific redevelopment strategies
- ▶ Performing spatial analysis
- ▶ Calculating potentials

Taking the context into account

Residential area

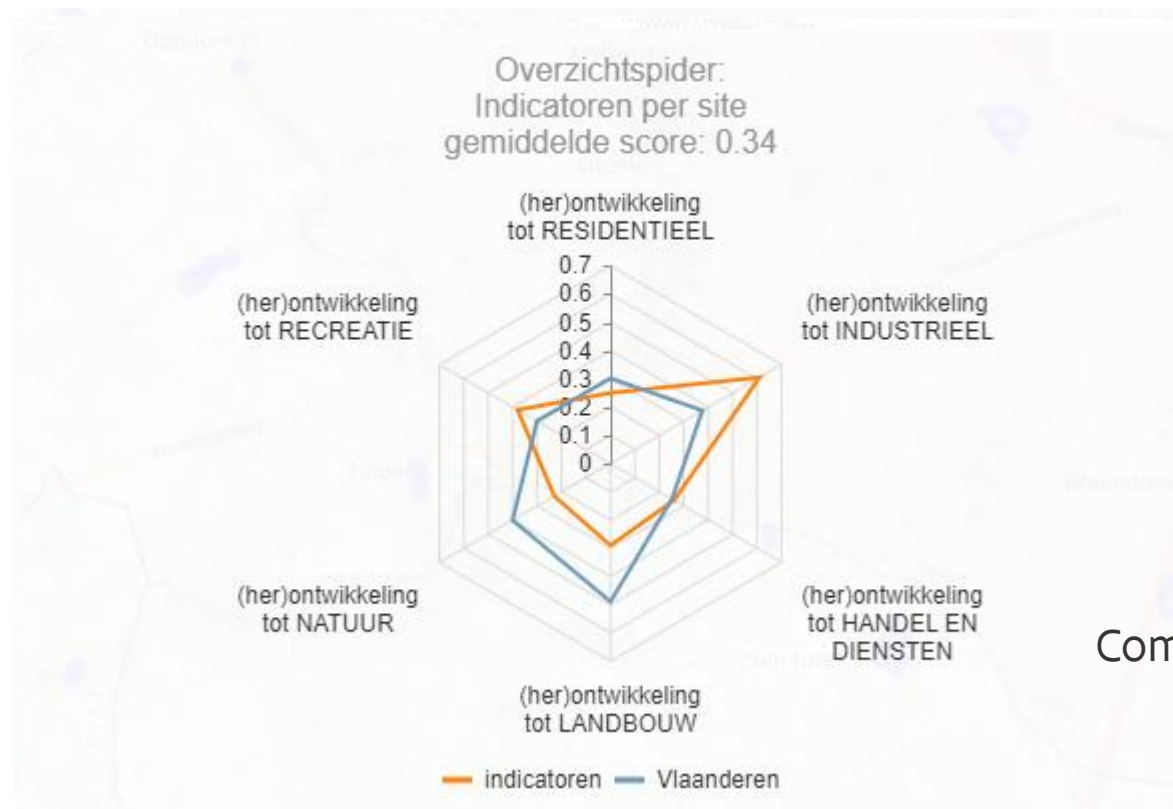
Recreation

Industrial

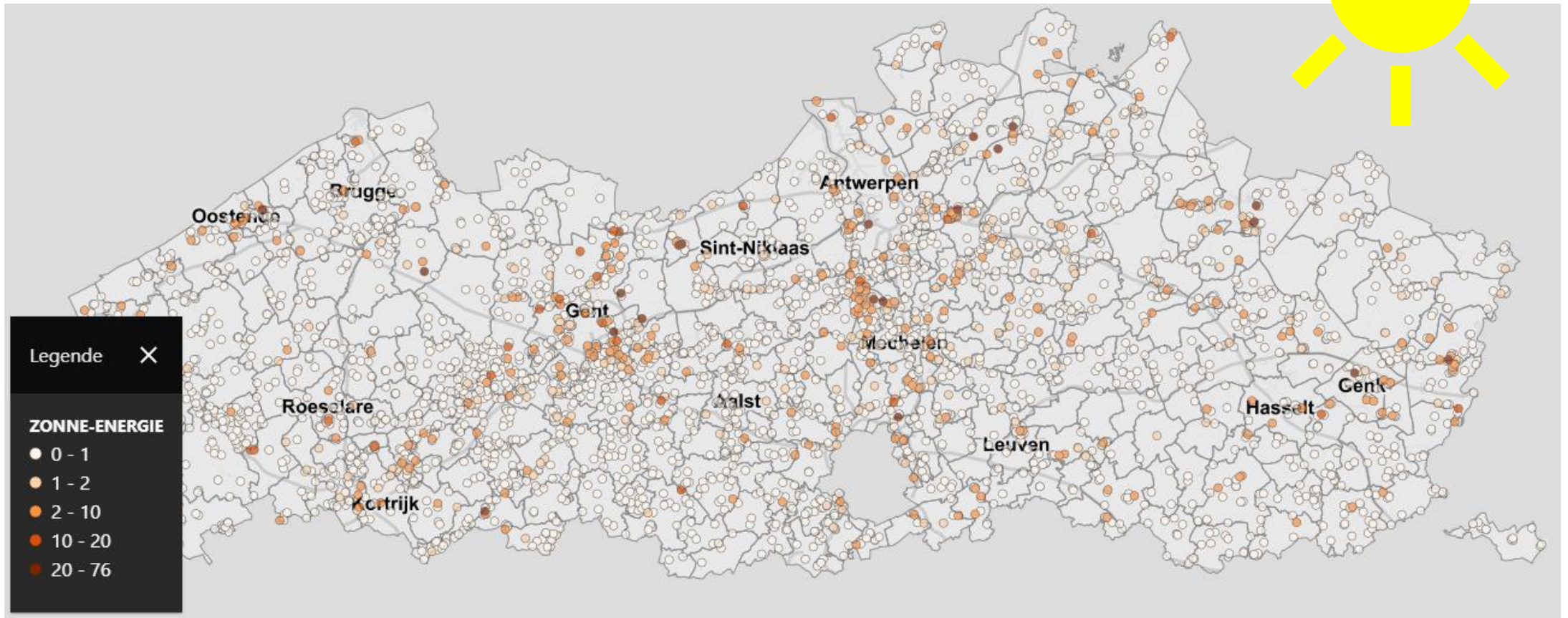
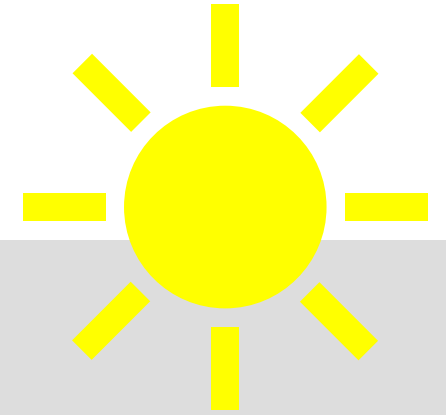
Nature

Commercial activities
and logistics

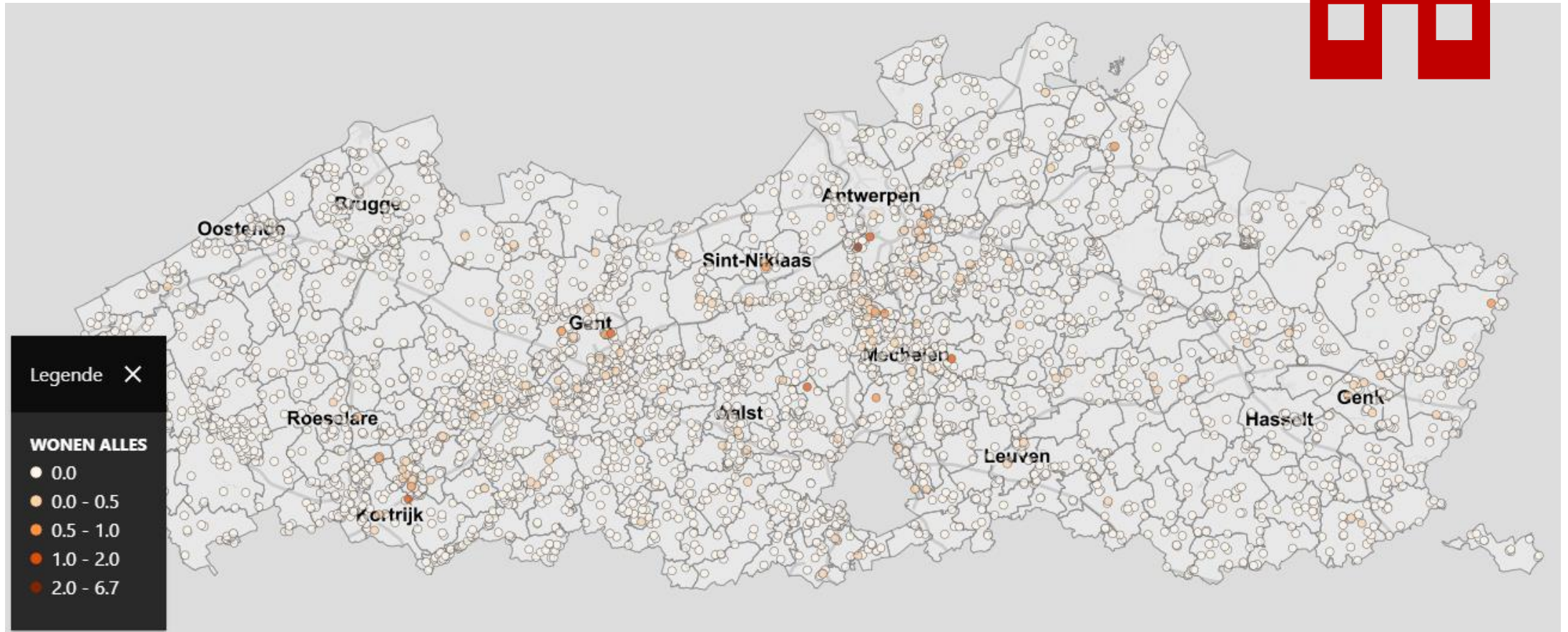
Agriculture



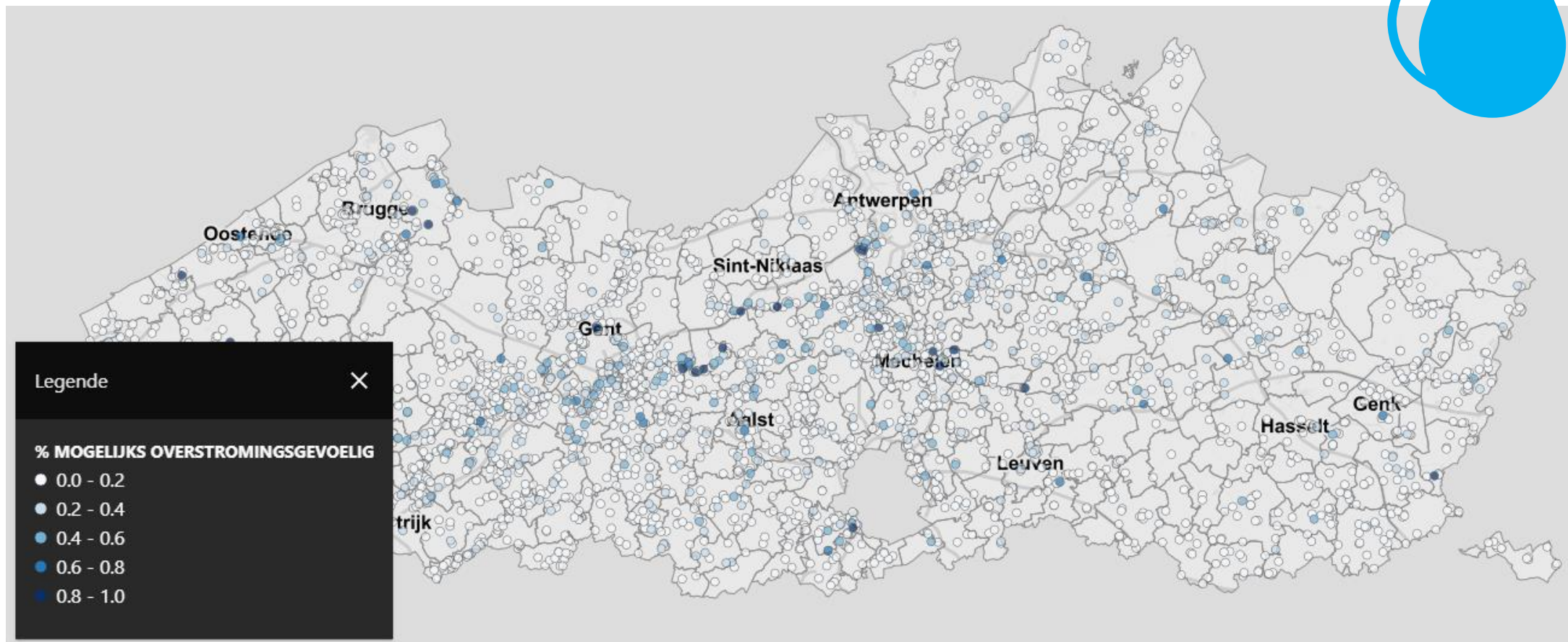
Opportunities for solar energy



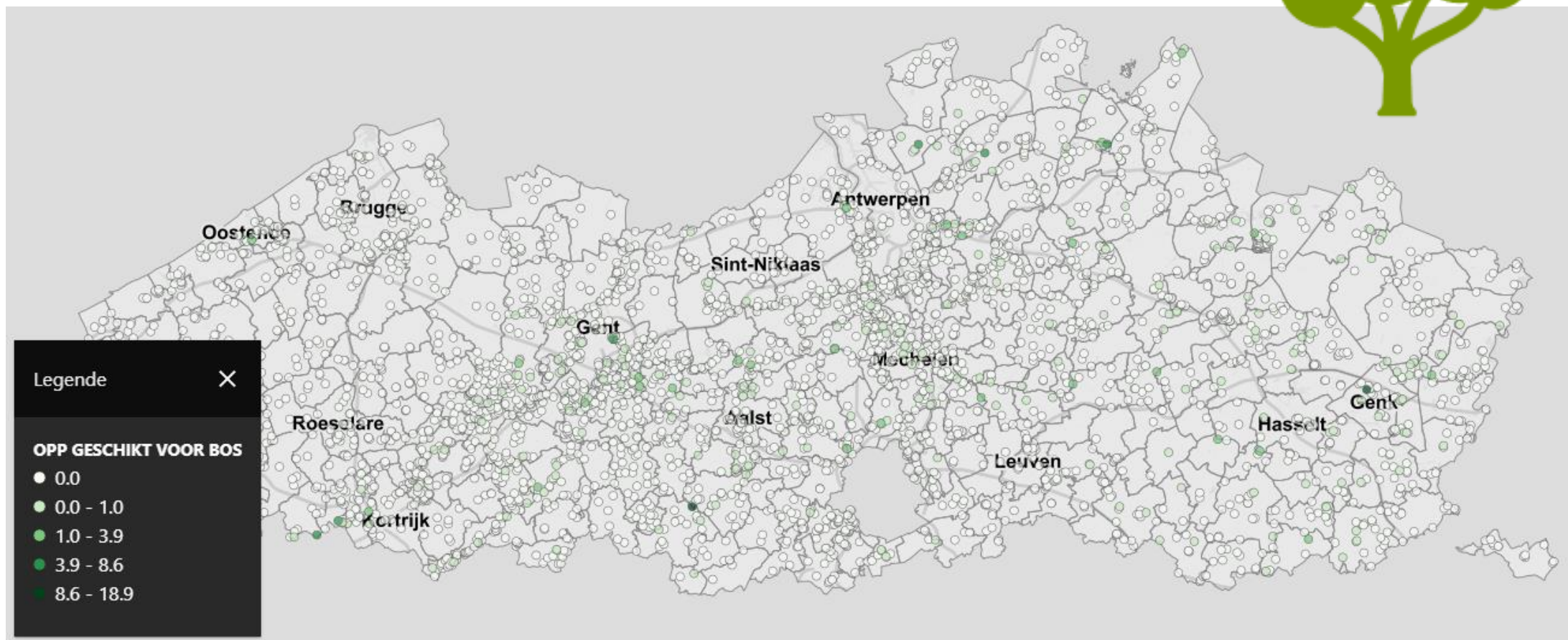
Opportunities for residential areas



Opportunities for water management



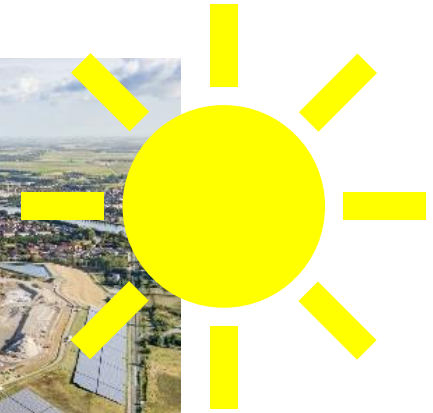
Opportunities for afforestation



No virtual reality!



And many more...



Flanders
State of the Art

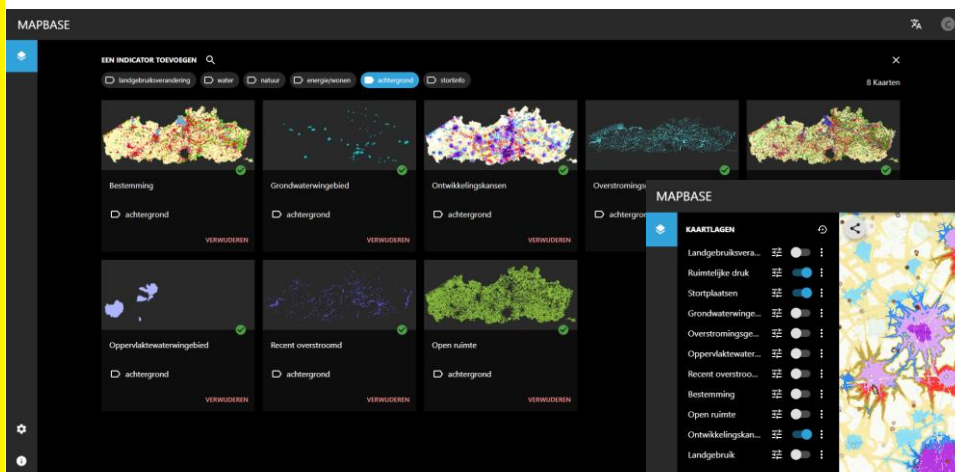
WE MAKE
TOMORROW
BEAUTIFUL
OVAM

Next steps on mapping

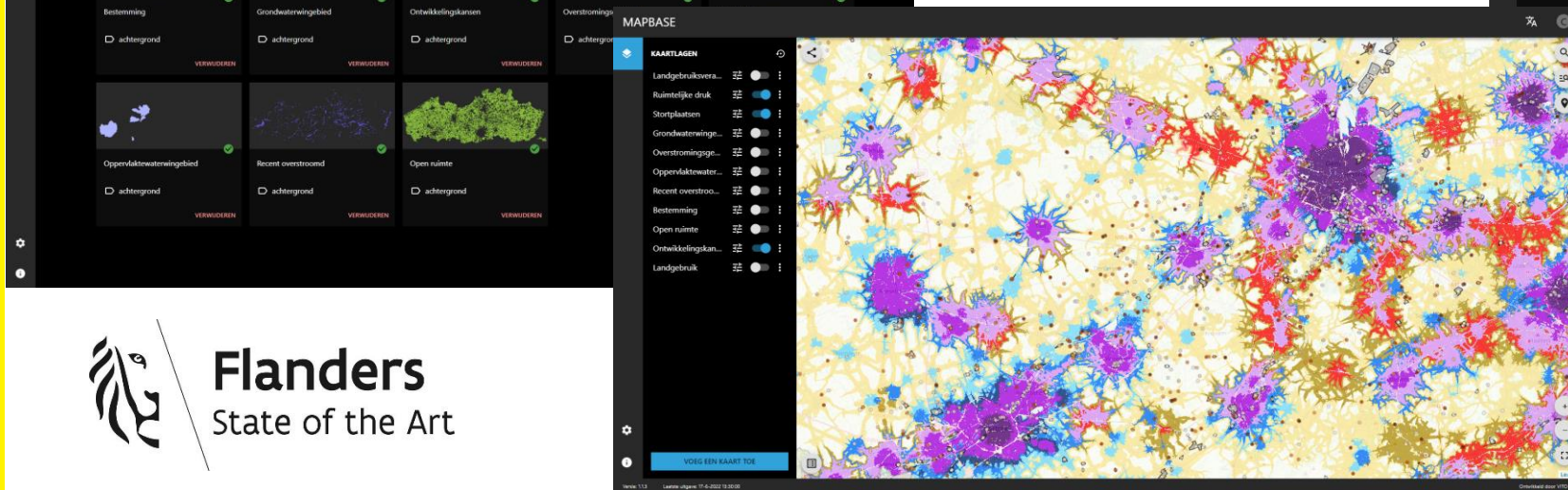
- More extensive collection of landfill data
- Broader communication of collected data
 - A more interactive format (webviewer)
 - Search for future options;
- Broader communication of good practices and inspiring examples



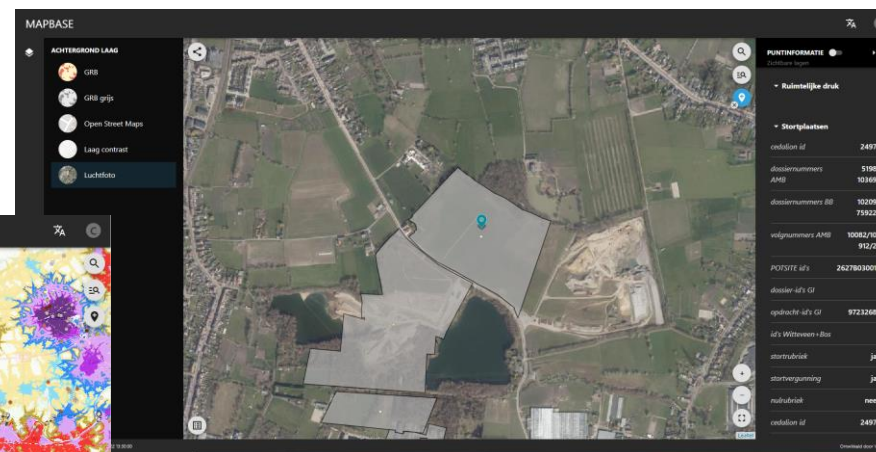
Background maps



Combining spatial layers



Site-specific information



**“When our information
changes, we change our
conclusions”**

John Maynard Keynes



Flanders
State of
the Art



Thanks for your attention

More information on:

Dynamic Landfill Management:

<https://ovam-english.vlaanderen.be/dynamic-landfill-management>

Duurzaam Voorraadbeheer van Stortplaatsen:

<https://ovam.vlaanderen.be/stortplaatsen>

cuinera.isenborghs@ovam.be

eddy.wille@ovam.be